



# Spectrum

CE SYSTEM





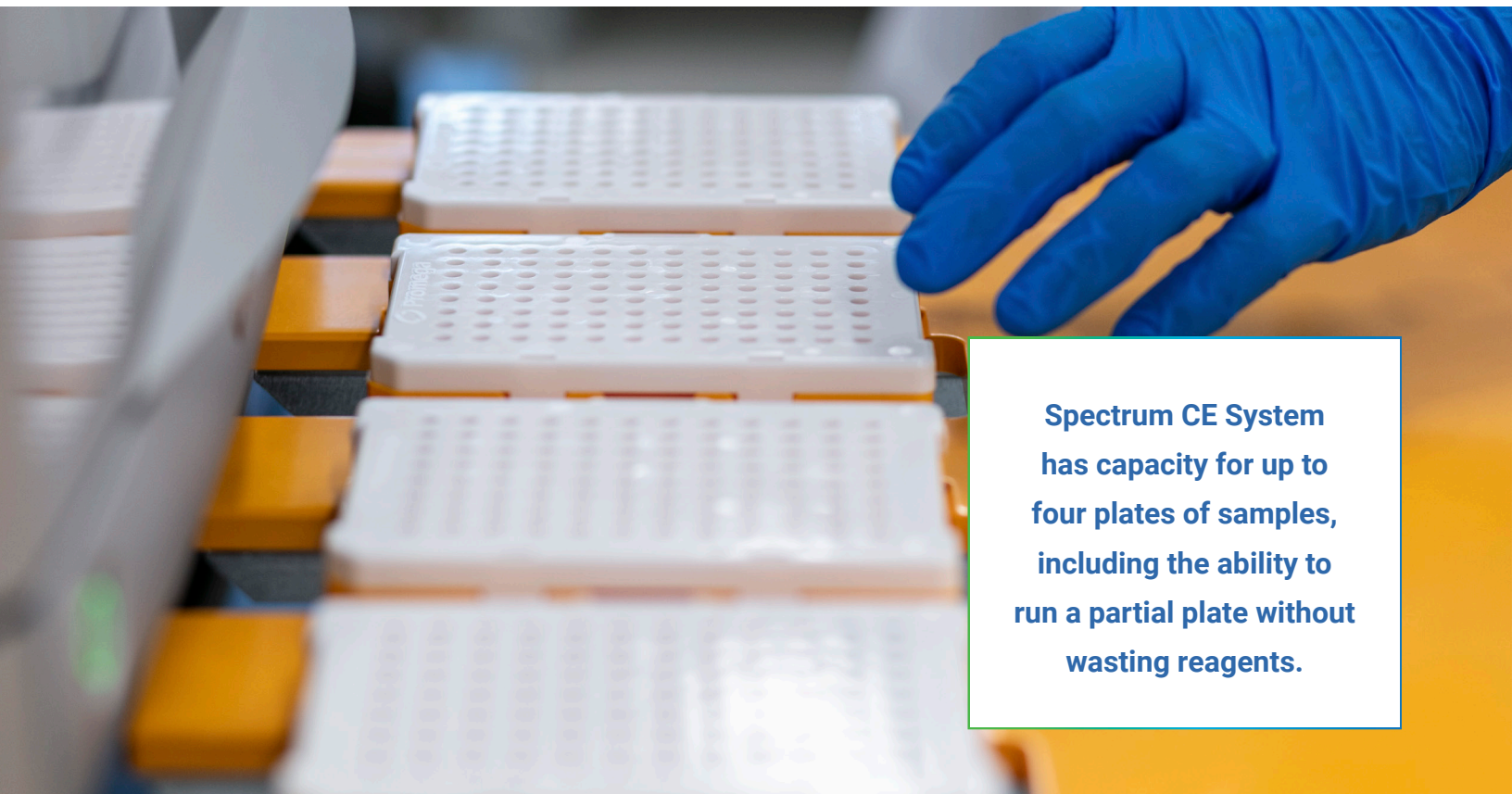
## Discover the CE you've been missing.

Designed for STR analysis, the Spectrum CE System is built to streamline and support your forensic and paternity workflow needs. Spectrum CE System combines state-of-the-art STR analysis functionality with increased run flexibility, user-friendly software, and the service and support you've come to trust from Promega. Spectrum is designed for use with existing 5- and 6-dye STR kits from Promega, Applied Biosystems and Qiagen. It also supports the next generation of 8-color STR kits.

## More Efficient Operation

With four 96-well plate positions and continuous plate accessibility, Spectrum offers more scheduling flexibility while maintaining productivity and assuring no efficiency loss with partial plate runs. Batching and sign up sheets can be a thing of the past—freeing up your team to work on more valuable tasks.

Integrated data collection and analysis software provides automatic data quality assessment, reducing the time needed to screen for reinjections.



**Spectrum CE System  
has capacity for up to  
four plates of samples,  
including the ability to  
run a partial plate without  
wasting reagents.**



## Advanced Multiplexing Capabilities: More Information from Challenging Samples

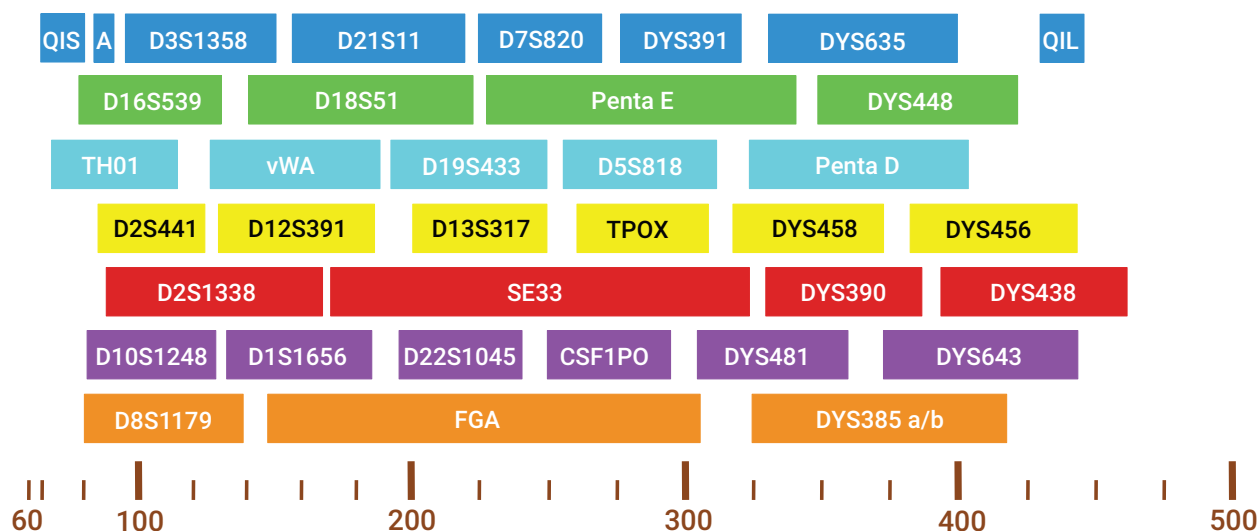
Spectrum is the first CE system to support the next generation of PowerPlex® 8-dye STR Systems. These new PowerPlex® Systems enable amplification and detection of more loci from challenging casework samples, resulting in more meaningful analyses.

Labs using the 8-dye systems can also expect more consistent results from variable database and reference samples, due to the narrower range of product amplicon sizes.

## More Mini-STRs for Improved Success with Difficult Samples

The PowerPlex® 35GY System allows co-amplification and fluorescent detection of the 20 CODIS Core Loci plus Amelogenin and DYS391 for gender discrimination. Penta D, Penta E and SE33 also are included to increase discrimination and allow searching of databases that contain profiles with these loci. With the two additional colors for detection, there are a total of 15 autosomal loci smaller than 250bp, aiding the analysis of challenging samples.

Additionally, we've designed the layout to allow smaller amplicon sizes for these particularly informative loci: SE33, D21S11 and D2S1338. Ten additional Y-STR loci are included to assist with forensic casework on sexual assault evidence or to enable familial searching, a technique known for its ability to provide investigative leads.



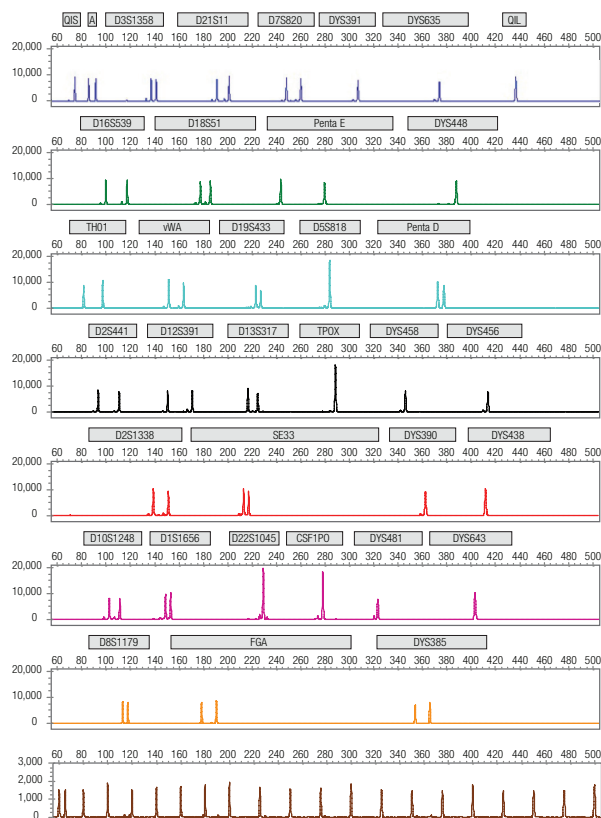
**Configuration of the PowerPlex® 35GY System.** The PowerPlex® 35GY System allows co-amplification and detection of 35 loci (24 autosomal and 11 Y-STR loci) CSF1PO, D3S1358, D5S818, D7S820, D8S1179, D13S317, D16S539, D18S51, D21S11, FGA, TH01, TPOX, vWA, D1S1656, D2S441, D2S1338, D10S1248, D12S391, D19S433 and D22S1045, SE33, Penta D, Penta E and Amelogenin; DYS391, DYS385a/b, DYS390, DYS438, DYS448, DYS456, DYS458, DYS481, DYS635 and DYS643. Two Quality Indicators (QIS and QIL) are also included to assist with data interpretation.



## High Quality Results from All Your Samples

Designed to work exclusively on the Spectrum CE System, the PowerPlex® 35GY System is compatible with both extracted DNA and direct amplification samples.

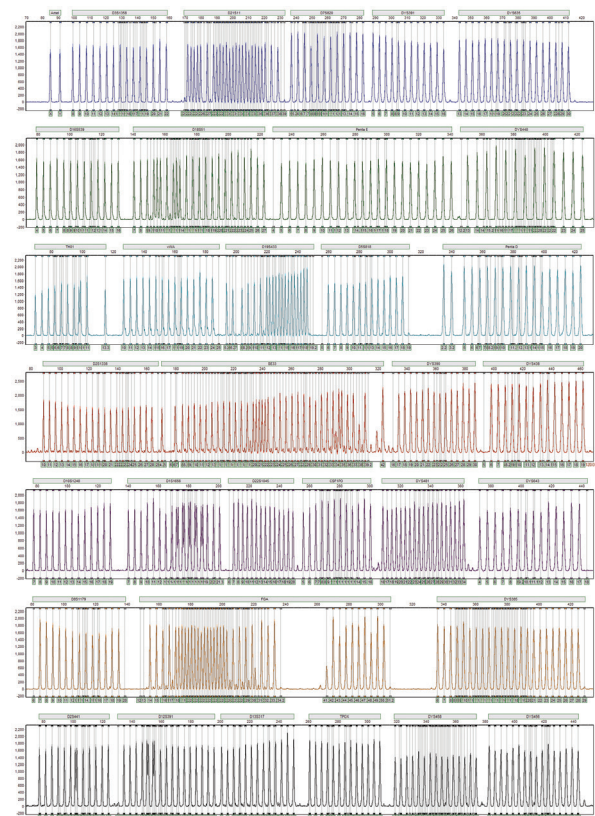
The kit offers optimized protocols for various sample types, including direct amplification from FTA® cards and pretreated non-FTA® card punches or swabs in both full-volume (25µl) and half-volume (12.5µl) reactions. The figure below shows results from a cotton swab buccal sample in which the DNA from that swab was amplified directly using a half-volume reaction.



DNA from a buccal swab in Swab Solution™ Reagent was amplified with the prototype PowerPlex® 35GY System in a 12.5µl reaction. Amplification products were separated on the Spectrum CE system.

## More Information for Improved Decision Making

New in the 8-color PowerPlex® systems is the inclusion of two Quality Indicators to assess the presence of inhibitors, designed to minimize the need to repeat unusable or poor STR analyses that resulted from inhibited DNA. The two Quality Indicator peaks (QIS and QIL) provide data interpretation assistance, by providing more information about the sample, such as whether or not it was degraded or inhibited.



2800M Control DNA (1ng) was amplified with the prototype PowerPlex® 35GY System. Amplification products were separated using the Spectrum CE System.

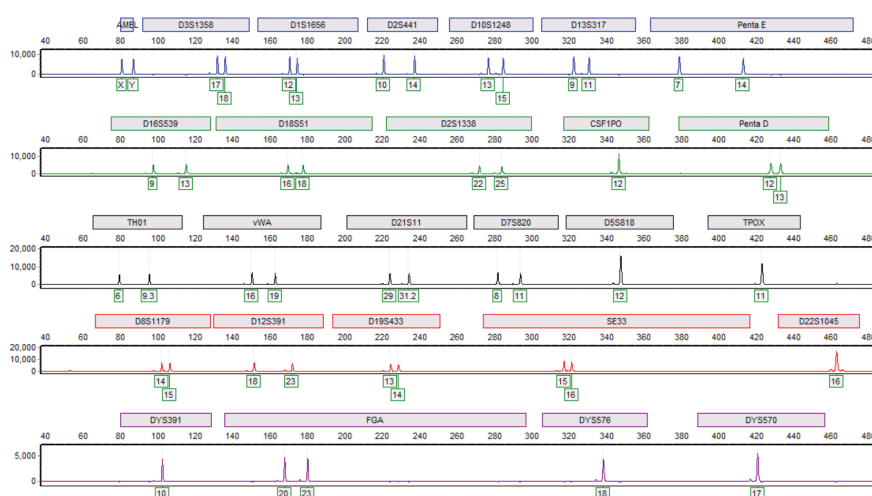


## Compatible with the Kits You Already Love

Spectrum CE System is the first CE system to support 8-dye technology. However, if your laboratory is satisfied with an existing 4-, 5- or 6-color kit you've already brought online, the Spectrum CE System has got you covered. You'll be able to continue using those same multiplexes and still benefit from the increased throughput and flexibility that the Spectrum CE enables.

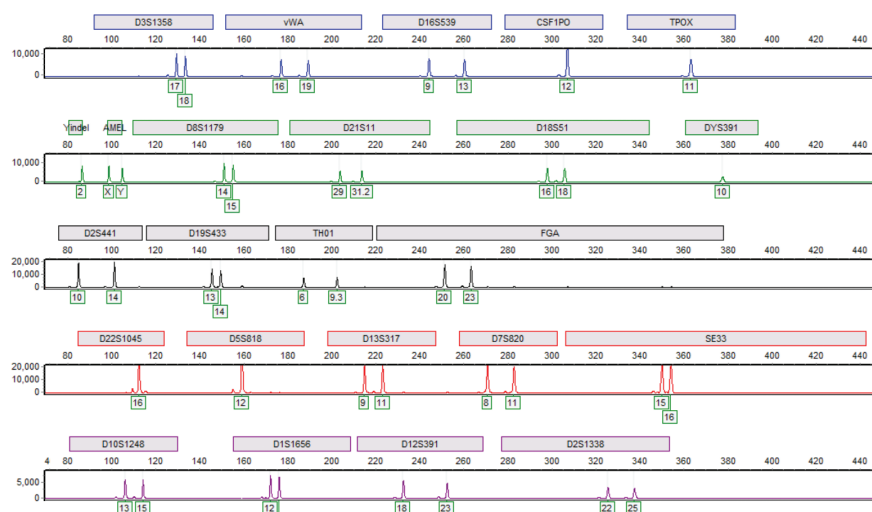
The following figures demonstrate the solid performance of the Spectrum CE System when running samples amplified with the PowerPlex® Fusion 6C System and GlobalFiler® PCR Amplification Kit.

### PowerPlex® Fusion 6C System



2800M Control DNA (1ng) was amplified with PowerPlex® Fusion 6C System. Amplification products were separated using the Spectrum CE System.

### GlobalFiler® PCR Amplification Kit




2800M Control DNA (1ng) was amplified with GlobalFiler® PCR Amplification Kit. Amplification products were separated using the Spectrum CE System.



## Full Complement of Consumables and Accessories

We've designed the Spectrum CE System to provide simplified setup and operation. Related consumables, such as pre-filled buffer and polymer, will be offered in convenient, ready-to-use packaging. Complementary consumables are also available for purchase.

Spectrum uses Radio Frequency Identification (RFID) to track key consumables with minimal "hard stops" limited to situations where there is a risk of instrument damage.

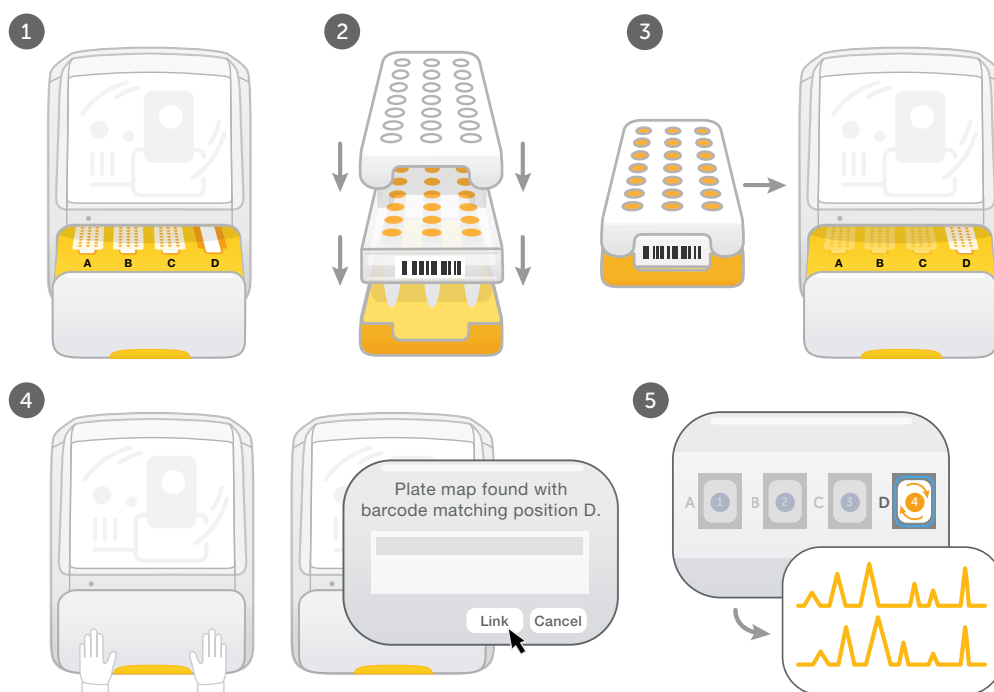


**Consumables are sold  
in a ready to use format,  
so the lab can get up and  
running in no time.**



## One-Click Sample Tracking

Spectrum features automatic recording of plate barcodes and auto-import of plate map files with matching barcode information—making import of sample names a one-click process. This feature is supported by novel plate holders that allow barcode visibility when fully assembled and in the instrument. There is less opportunity for error, with an exact record of plates analyzed, and easier, faster operation.



## Promega Support—With You At Every Step

Promega chemistry and hardware are integrated to provide optimized results for the Spectrum CE System. We offer on-site installation and training for the instrument, software and STR kits, as well as timely on-site repair and preventative maintenance service to ensure minimal interruption of your laboratory operations.

Our Validation Services team can provide a range of services, designed to meet your laboratory's needs and your preferred scope of work:

- Phone-based and on-site consultation
- On-site bench work tailored to your requirements
- Rapid turnaround of data analyses and summary reports



## An Overview of GeneMarker® HID-Spectrum Software

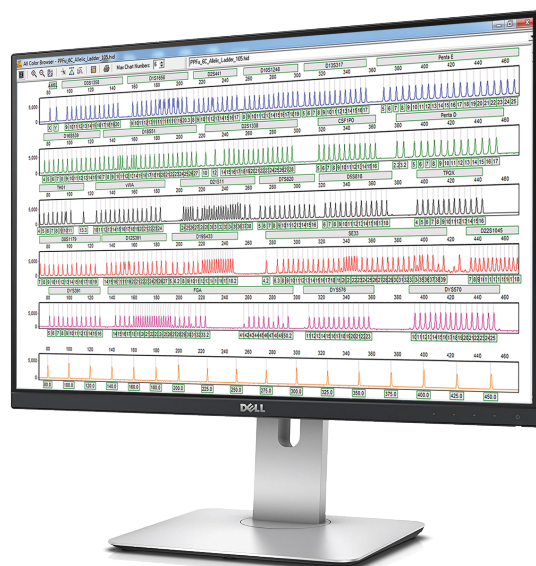
### Simplified User Operation

The linked navigation and “point and click” interface makes the software simple to follow and reduces analyst fatigue. Run Wizard includes pre-installed templates for each amplification kit, eliminating the need to import panels, bins and stutter files. Analysis templates are easily saved and shared with all members of the laboratory.

### Broad Kit Compatibility

## User Management with Audit Trail

A wide range of reporting options are available to meet LIMS and report printing needs. Analysis and display options are customizable and enable easy follow up and tracking.







## Easy-to-use Instrument Control and Data Software

### **System Software**

The Spectrum Control Software provides a simple user interface with a clear display of useful features, including run scheduling, consumables and array usage information, as well as system maintenance reminders. The software's ease of use can help reduce training time and minimizes the potential for errors due to poor setup.

The Spectrum CE System was designed with forensic laboratories in mind to make CE analysis as easy as it gets. An experienced CE user can be up and running on the instrument within an hour. New users will also find the software to be intuitive and easy to understand.

Spectrum CE System comes loaded with features to have you quickly running analyses. Because less training time for proficient use is needed, more time can be focused on preparing samples and analysis.





## System Components

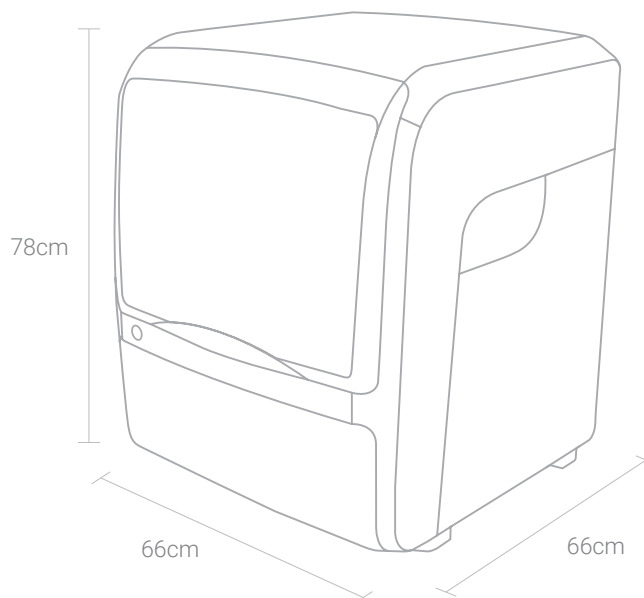
The Spectrum CE System is supplied as follows:

- Capillary electrophoresis instrument
- Starter Kit for installation and training
- Computer workstation and high-definition, flat-screen monitor
- Includes one (1) license each: Spectrum Control Software and instrument workstation-specific version of GeneMarker®HID Software for Spectrum CE System
- On-site service for installation and initial user training
- 12 months of on-site repair service, including one preventative maintenance visit





## Specifications



Approximate Dimensions	Overall: 66cm W × 66cm D × 78cm H Footprint: 62cm W × 48cm D
Weight	Approximately 104kg (external computer excluded)
Main Power Voltage	100-120/200-240 VAC (global compatibility) 15 amps
Operating Environment	15°C to 30°C
Plate Capacity	Up to 4 plates, with semi-continuous accessibility
STR Chemistry	Optimized for use with existing STR kits Supports next generation of 8-dye PowerPlex® Systems
Service and Warranty	1-year limited warranty on parts and labor Service installation On-site application training Extended service contracts are also be available separately—please enquire
Validation Support	Available separately—please enquire

To learn more, visit:

[www.promega.com/MeetSpectrum](http://www.promega.com/MeetSpectrum)



To learn more about GeneMarker®HID Software, visit:

[www.softgenetics.com](http://www.softgenetics.com)

PowerPlex is a registered trademark of Promega Corporation.  
GeneMarker is a registered trademark of SoftGenetics.  
ThermalSeal is a registered trademark of Excel Scientific, Inc.

Not for Medical Diagnostic Use. Class 1 Laser Product.

Products may be covered by pending or issued patents or may have certain limitations.  
Please visit our Web site for more information.

